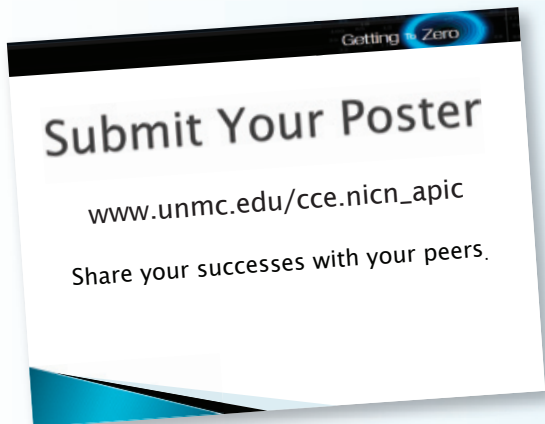


SHARE YOUR CREATIVITY

Attendees are invited to share their creative and scientific ideas on infection prevention issues. The presentation format is a simplified series of power point slides that will be placed on a poster board when the presenter arrives at the meeting. Format, directions and the registration form can be found at www.unmc.edu/cce/nicn_apic. There will be a poster competition, and posters will be judged based upon facility size, creativity and scientific presentation.



ADA

In compliance with the Americans with Disabilities Act, the University of Nebraska Medical Center, Center for Continuing Education does not discriminate on the basis of disability. The Center shall provide reasonable accommodation, including auxiliary aids and services, to ensure equal access to its programs, services, and activities. If you would like an auxiliary aid or service, please call Joan Husted at (402) 559-6235 by August 13, 2010, with your request.

CONFERENCE OBJECTIVES

1. To discuss the most current information on infection prevention and control in various healthcare settings.
2. To explain the role of infection prevention and control in patient safety and quality improvement programs.
3. To review the latest information about infectious diseases as well as methods to control the spread of these diseases in the healthcare setting.

NICN (NEBRASKA INFECTION CONTROL NETWORK)

Website: www.nicn.org

Celebrating 30 years, the NICN is a joint effort of several Nebraska organizations, emphasizing educational programs pertaining to infection prevention and research.

APIC (ASSOCIATION FOR PROFESSIONALS IN INFECTION CONTROL AND EPIDEMIOLOGY, INC.)

Website: www.apic.org

Nebraska chapter website:

www.goapic.org

APIC promotes wellness and prevents illness and infections worldwide by advancing health-care epidemiology through education, collaboration, research, practice and credentialing.

HOTEL ACCOMMODATIONS

Embassy Suites- Omaha-LaVista
12520 Westport Parkway
(off of I-80 at Exit 442)

Rate: \$124.00; cut-off date: August 5;
(402) 331-7400



Courtyard Marriott Omaha-LaVista
12560 Westport Parkway
(off of I-80 at Exit 442)

Rate: \$99; cut-off date: August 12;
contact Sherry Zaloudek, (402) 682-3554

Hampton Inn & Suites - LaVista
12331 Southport Parkway
(off of I-80 at Exit 442)

Rate: \$109; cut-off date: August 2;
contact hotel front desk, (402) 895-2900

NICN/APIC 2010 INFECTION PREVENTION CONFERENCE

AUGUST 27, 2010

LA VISTA EMBASSY

SUITES HOTEL

12520 WESTPORT PARKWAY
LA VISTA, NE

SPEAKERS

This course is approved for 5.5 Contact Hours for Nurses and .55 CEU's for Iowa Nurses through Iowa Western Community College Iowa Board of Nursing Provider # 6.

TIME	GENERAL SESSION TOPIC/SPEAKER		
7:30 A.M./8 A.M.	Registration and continental breakfast/Welcome and Announcements		
8:15-9 A.M.	Influenza: Is Nature Playing Lullabies? (Robert G. Webster, PhD, FRS, Rose Marie Thomas Chair, Division of Virology, Department of Infectious Diseases, Memphis, TN)		
9-9:45 A.M.	Status Report on Elimination of Healthcare-Associated Infections: Mission Accomplished or Work in Progress? (Russell N. Olmsted, MPH, CIC, Epidemiologist, Infection Prevention and Control Services, St. Joseph Mercy Health System, Ann Arbor, MI; President-Elect, Association for Professionals in Infection Control and Epidemiology)		
9:45-10:15 A.M.	Break and Exhibits		
10:15-11 A.M.	Infectious Disease Risk Associated with Space Flight (Duane L. Pierson, PhD, Chief Microbiologist, NASA Johnson Space Center, Houston, TX)		
11 -11:45 A.M.	Infectious Diseases Quiz - Audience Participation (Philip W. Smith, MD, President NICN; Chief of Infectious Disease, UNMC)		
11:45 A.M. TO 1 P.M.	Lunch, Posters and Exhibits		
	CONCURRENT SESSIONS TOPIC/SPEAKER		
	Acute Care Track	Long-Term Care Track	Ambulatory Care Track
1-1:45 P.M.	Healthcare Quality: A CEO Perspective — Marty Fattig, CEO, Nemaha County Hospital, Auburn, NE	State of the Union: Infection Prevention in LTCFs — Gail Bennett, RN, MSN, CIC, President ICP Associates, Inc., Rome, GA	Recent Outbreaks in Ambulatory Settings Highlight the Importance of Infection Control — Melissa K. Schaefer, MD, Medical Epidemiologist, Division of Healthcare Quality Promotion, U.S. Centers for Disease Control and Prevention, Atlanta, GA
2-2:45 P.M.	Control of MRSA Transmission and Infection: Controversies and Conundrums — Mark E. Rupp, MD, Professor, Section of Infectious Diseases, Department of Internal Medicine, University of Nebraska Medical Center; Medical Director, Department of Healthcare Epidemiology, The Nebraska Medical Center, Omaha, NE	Avoiding the Land Mines: F441 and Other Regulations — Gail Bennett, RN, MSN, CIC, President ICP Associates, Inc., Rome, GA	Cleaning/Disinfection – What Every ICP Should Know — Martha L. Young, BS, MS, CSPDT, Martha L. Young, LLC, Woodbury, MN & Peggy Prinz Luebbert, MS, MT(ASCP), CIC, CHSP, Healthcare Interventions, Inc.
3-3:45 P.M.	Defining and Controlling Infectious Control Issues During the Construction Process — Michael Hershey, Administrator, Healthcare Construction and Environmental Concerns, Sampson Construction Company, Inc., Lincoln, NE	How to Interpret Microbiology Reports in the LTCF — Peter C. Iwen, MS, PhD, D(ABMM), Professor, Department of Pathology and Microbiology; Associate Director, Nebraska Public Health Laboratory; Biosafety Officer, University of Nebraska Medical Center, Omaha, NE	Sterilization – What Every ICP Should Know — Martha L. Young, BS, MS, CSPDT, Martha L. Young, LLC, Woodbury, MN & Peggy Prinz Luebbert, MS, MT(ASCP), CIC, CHSP, Healthcare Interventions, Inc.
3:45-4 P.M.	Evaluation & Adjourn	Evaluation & Adjourn	Evaluation & Adjourn

NICN/APIIC 2010 INFECTION PREVENTION CONFERENCE

August 27, 2010
LaVista Embassy Suites Hotel
Registration fee: \$70
Course code: CIK 10357

Register online at unmc.edu/cce/nicn_apic
Mail/fax this completed registration form by **August 13, 2010**, to:
Center for Continuing Education
University of Nebraska Medical Center
986800 Nebraska Medical Center
Omaha, NE 68198-6800
Fax: (402) 559-5915 • Call (402) 559-5929
(available 9 a.m. - 3 p.m. CST Monday - Friday)

Name	
Address	
City/State/ZIP	
Telephone	Fax
Email Address	
Degree	
Please choose one: <input type="checkbox"/> Acute Care Track	
<input type="checkbox"/> Long-Term Care Track <input type="checkbox"/> Ambulatory Care Track	

PAYMENT

<input type="checkbox"/> Check or money order enclosed (Payable to UNMC CCE).	
<input type="checkbox"/> Charge to my <input type="checkbox"/> American Express <input type="checkbox"/> MasterCard <input type="checkbox"/> Visa	Card Number
	Expiration Date
	Three-Digit Verification Code
	Cardholder's Name
	Signature

Refunds will be made if cancellations are made prior to August 13th.
Registration fee covers continuing education credit, handout materials, breakfast, lunch and breaks.